

BBC

**577 BEST BUYS**  
TO SUIT ALL BUDGETS

10 PANELLING SETS TO WIN WORTH £5,500



ON  
**£2.99**

# Good Homes

FEBRUARY 2009

## Transform your rooms with colour

- Red hot decorating ideas
- Plum & gold living room
- 12 patterned carpets
- PLUS** Best budget buys

**'Sort out small rooms'**  
Clever buys mini makeovers



**LIVE TO GOOD LIFE**

Grow vegetables  
Keep chickens  
you can do

**ONE WHITE BATHROOM... TWO LOOKS TO COPY**

**READER HOME**

Quaker meeting house

Architect-designed new building

19th-century village house

Edwardian terraced house

Stunning Tuscan farmhouse

**CELEBRITY HOME**

**SEE INSIDE JOHN TORODE'S KITCHEN**

**SLATE OR LAMINATE?**

Our guide to hard flooring

**BUYER'S GUIDE HOME GYM BUYS HEALTHY COOKING COMPACT STORAGE IDEAS**

TRIED & TESTED  
ROOM RECIPE

# New Victorian living room

Follow our recipe to create a dramatic living room inspired by the Victorian era

## The ingredients...

**Walls** painted in Burst Feature Wall matt emulsion in Mulberry, £10.59 per 1.25ltr; Dulux. **Curtains** in Arkona Collection Iola 8605 silk, £49 per m. Lining in Lucido Plains 93% viscose and 7% silk in Amethyst 7466, £27 per m, both Harlequin. Cage **curtain pole**, £29.98. B&Q. Alhambra tassel **tie-back**, £40, John Lewis. Wool Cord Sable 5790 **carpet**, £42 per sq m. The Alternative Flooring Company. Plum Bands **rug**, from £70 for W100 x L150cm, Next. Grande Dame **sofa** (H75 x W220 x D98cm) in Seduction Grape, £2,436. Sofa Workshop. **Cushions** on sofa (from left): Linea Miso Stencil Leaf, £30, House of Fraser; Velvet Ripple in green (just seen), £20, Casani Wasabi striped, £35, both John Lewis; Regency in Dijon Yellow, £29, Habitat; Linea purple linen swirl, £30, House of Fraser. Wilton **armchair** in Brianza Aubergine, £1,500, John Lewis. Trumpet **side table** in metallic gold lacquer (H62 x Dia50cm), £295, Louis black **coffee table** (H45 x W120 x D72cm), £595, Louis black tower **shelving unit** (H144 x W45 x D45cm), £650, all Heal's. On side table: floral **vase**, £35, Marks & Spencer. On coffee table: gold lacquer Mosaic **tray**, £18, The Pier; hurricane **lamp** used as vase, £25, Marks & Spencer; **notebook**, £8, Paperchase. On shelving unit: brass **leaf bowl**, £75, The Conran Shop; Snowstorm brass laser-cut **storage boxes**, £150 for a set of three, The Conran Shop. On mantelpiece: Carlisle purple glass **table lamps** (H70 x Dia30cm), £100 each, Heal's; **pillar candlesticks**, £17.50 each, Bobble **candlesticks**, £12.50 each, all Paperchase. LSA glass **tea-light holders** in Heather, £11 each, Megan gilt **mirror** (H90 x W90cm) £200, all John Lewis. On wall: **picture frames**, from £14 each, Paperchase. **postcards** (in frames), find similar at major bookshops.



### STYLE SUGGESTION

Team plum and purple with sleek furniture and smart home accessories in gold and berry shades

# 5 STEPS TO success

*Dramatic colour and rich textures are key to creating this luxurious scheme. Set off a purple velvet Chesterfield sofa with a wall painted in a juicy shade of plum*



**1 Walls** Choose a dark colour to create a sumptuous backdrop, then balance the scheme with similar deep shades and highlight with gold accessories.



**2 Floors** A soft wool carpet in a deep shade of brown creates a harmonious look by blending with the tones of the walls and furniture.



**3 Upholstery** This luxurious purple Chesterfield sofa with its buttoned back and high arms has a classic shape that will stand the test of time.



**4 Fabrics** Curtains in opulent silk are perfect for this scheme. Line them with a contrasting fabric for added glamour and tie them back with a heavy tassel.



**5 Accessories** Complete the look with a mix of textured cushions in rich berry colours, coloured glassware for extra sparkle and a gilt mirror for glamour.

12 OF THE BEST

# Patterned carpets

We've picked the best wool carpets for style, comfort and warmth

For details, see stockist pages



PRETTY FLORALS



**From left to right:** Subtle floral design Royal Seaton Calico in Light Mink, £60 per sq m, Axminster. Midnight blue motif Parterre Blue 3/38176, £58 per sq m, Classic Florals range at Brintons. Country cottage style Custom cut-pile Wilton carpet, from £88 per linear m, Blenheim Carpets. Autumnal look Balta Wilton Supreme Persian in Beige, £29.99 per sq m, Carpetright



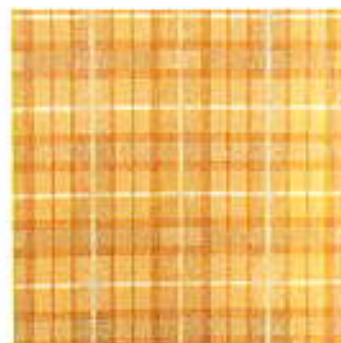
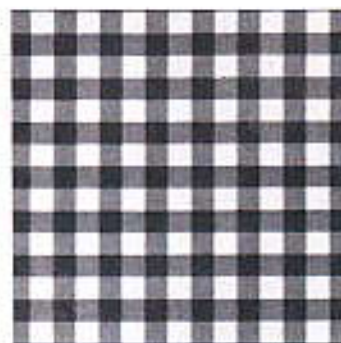
SMART STRIPES



**From left to right:** Dark and dramatic stripes Pampas Beach Hut Stripe 35 Torquay, £44 per sq m, Kersaint Cobb. Natural colour selection Simply Natural Stripe in Skyline, £39 per sq m, Axminster. Be bold Wool Mississippi in Burgundy/Blue WS11, £47.50 per sq m, Crucial Trading. Retro pattern Rock 'n' Roll in Leyla 1972, £45.75 per sq m, The Alternative Flooring Company



TRENDY CHECKS



**From left to right:** Winter-warmer plaid Fermanagh Plaid 9/38258, £58 per sq m, Abbeyglon range at Brintons. Black and white mix French Check in black, £72 per sq m, Karastan. Soft tone colours Natural Plaid in Autumn Glow, £45 per sq m, the Inspiration collection at Vorwerk Carpets. Chocolate shades Pled de Pile, £39, £45 per sq m, the Inspiration collection at Vorwerk Carpets